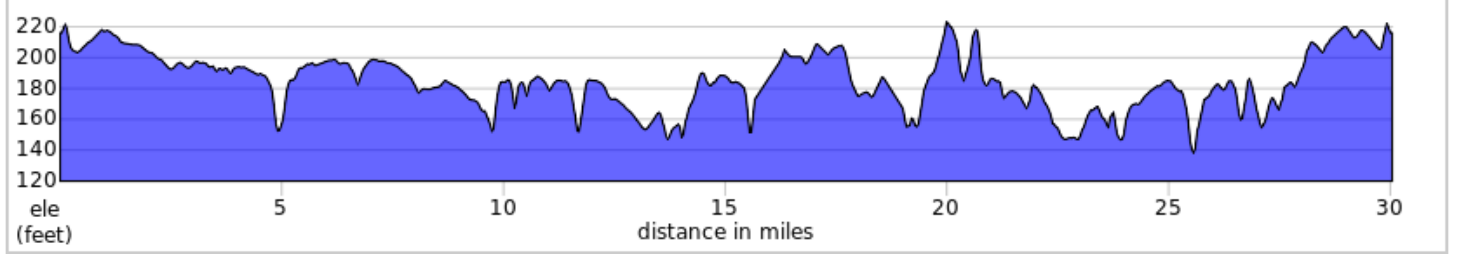
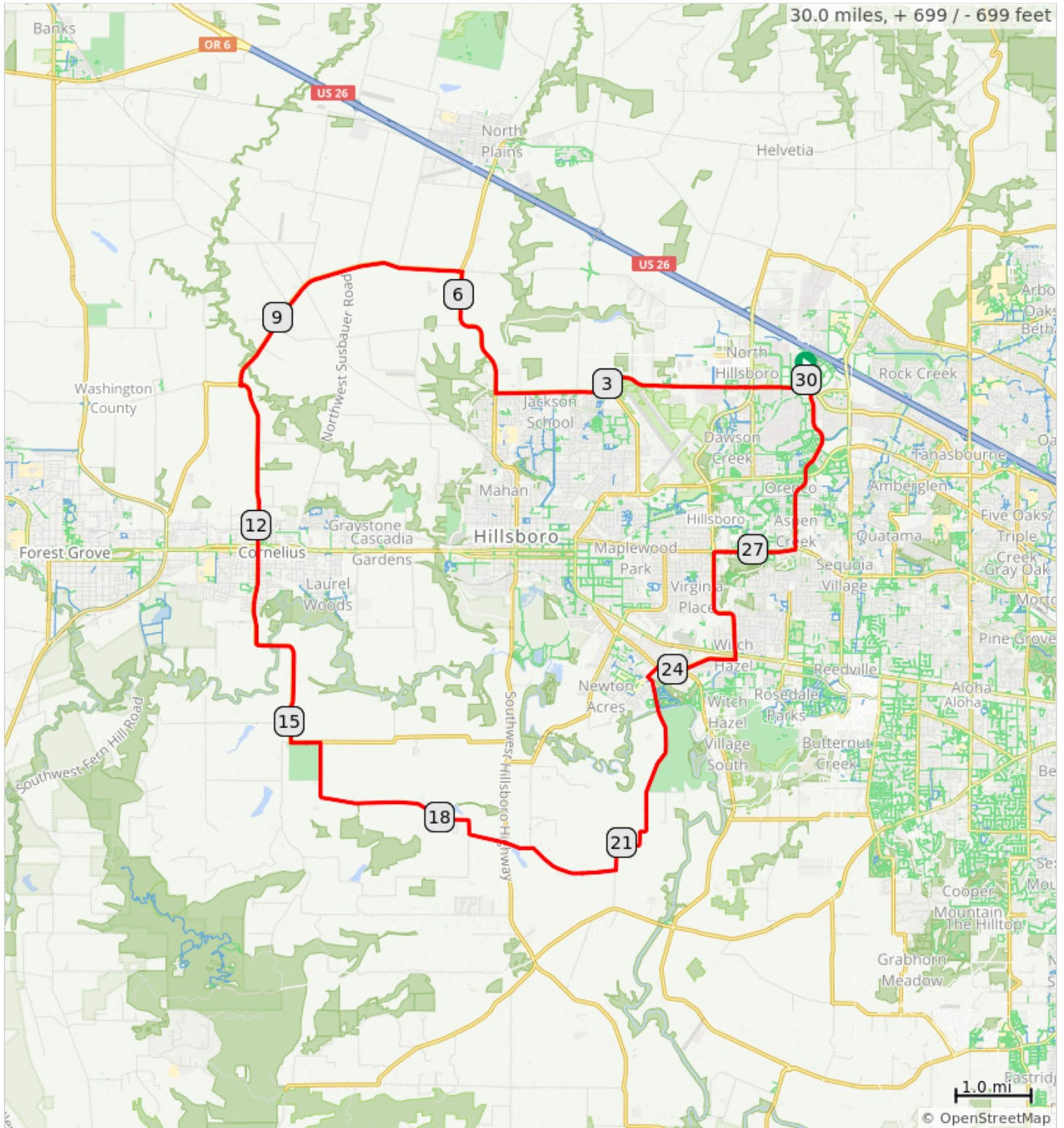


# barn quilts ccw sht



barn quilts ccw sht

Dist	Note	Next
0.0	Start of route	0.1
0.1	R onto NW 229th Ave/NE Century Blvd	0.1
0.3	R onto NE Evergreen Pkwy	4.2
4.5	R onto NW Glencoe Rd	1.8
6.3	L onto NW Zion Church Rd	2.0
8.4	Continue onto NW Cornelius Schefflin Rd	1.6
10.0	At the traffic circle, take the 2nd exit onto NW Cornelius Schefflin Rd	1.8
11.8	Continue onto N 10th Ave	1.3
13.1	Continue onto SW Golf Course Rd	2.2
15.2	L onto SW Tongue Ln	0.4
15.6	R onto SW Johnson School Rd	2.9
18.5	Slight L onto SW Simpson Rd	0.5
19.0	R onto OR-219 S	0.0
19.0	Continue onto SW Burkhalter Rd	0.4
19.4	R to stay on SW Burkhalter Rd	1.2

19.4 miles. +326/-386 feet

Dist	Note	Next
20.6	L onto SW Rood Bridge Rd	3.0
23.6	R onto SE Rood Bridge Rd	0.2
23.8	R onto SE River Rd	0.3
24.1	L onto SE Witch Hazel Rd	0.7
24.8	L onto SE Brookwood Ave	1.6
26.5	R onto W Baseline Rd/E Main St	1.1
27.5	L onto NE Century Blvd	2.4
29.9	Dog Park	0.1
30.0	End of route	0.0

10.7 miles. +266/-264 feet