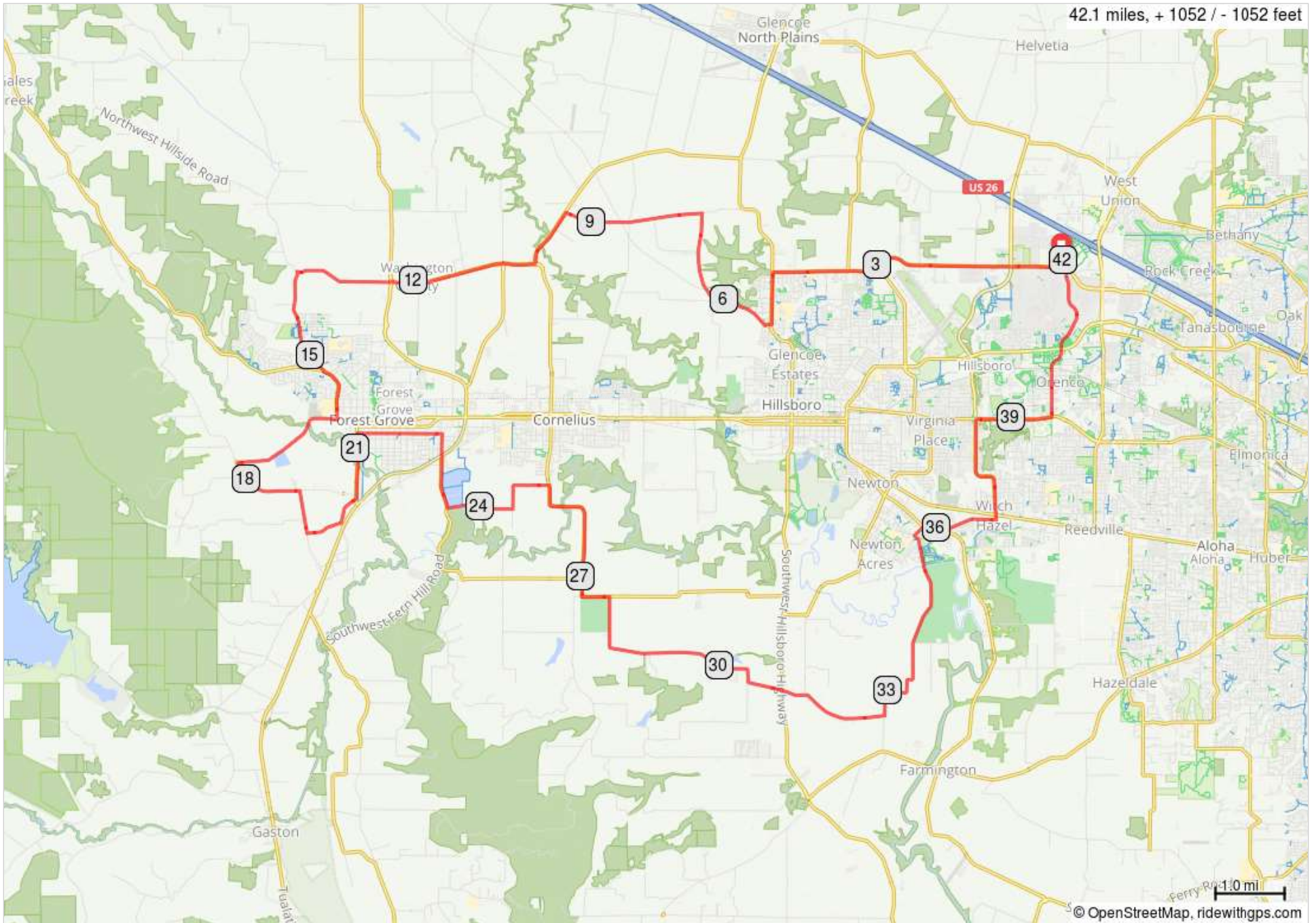


# Rainy Day 5



42.1 miles, + 1052 / - 1052 feet



<b>Rainy Day 5</b>			<b>Distance: 42.1 Miles</b>			<b>Elevation: 1053 ft</b>		
R	0.1	229th / Century	BeC	16.4	Ritchey	L	30.5	Simpson
R	0.3	Evergreen	L	17.7	Stringtown	X	31.0	OR-219
L	4.5	Glencoe	R	18.8	Dilley	BeC	31.1	Burkhalter
R	5.2	Cory	L	19.4	Hiatt	R	31.4	Burkhalter
R	5.3	Hornecker	L	19.9	Old Hwy 47	L	32.6	Rood Bridge
R	6.2	Leisy	L	20.3	B	R	35.6	Rood Bridge
L	7.5	Wren	R	21.2	18th	R	35.8	River
L	9.4	Cornelius Schefflin	R	22.4	Maple	L	36.1	Witch Hazel
O	10.3	Verboort (1st exit)	X	22.7	OR-47	L	36.9	Brookwood
O	10.7	Verboort (2nd exit)	BeC	22.7	Fern Hill	R	38.5	Baseline / Main
O	12.3	Purdin (2nd exit)	L	23.5	Geiger	L	39.6	Century
L	13.7	Thatcher	L	24.4	Lafollett	L	41.9	Dog Park
L	15.3	Gales Creek	R	25.3	Golf Course		42.1	Finish
BeC	15.6	E	L	27.3	Tongue			
R	16.0	Cemetery / Pacific	R	27.7	Johnson School			

Key: R=right turn; L=left turn; U=u turn; O=roundabout; BeC=becomes new Rd name; X=cross major Rd

