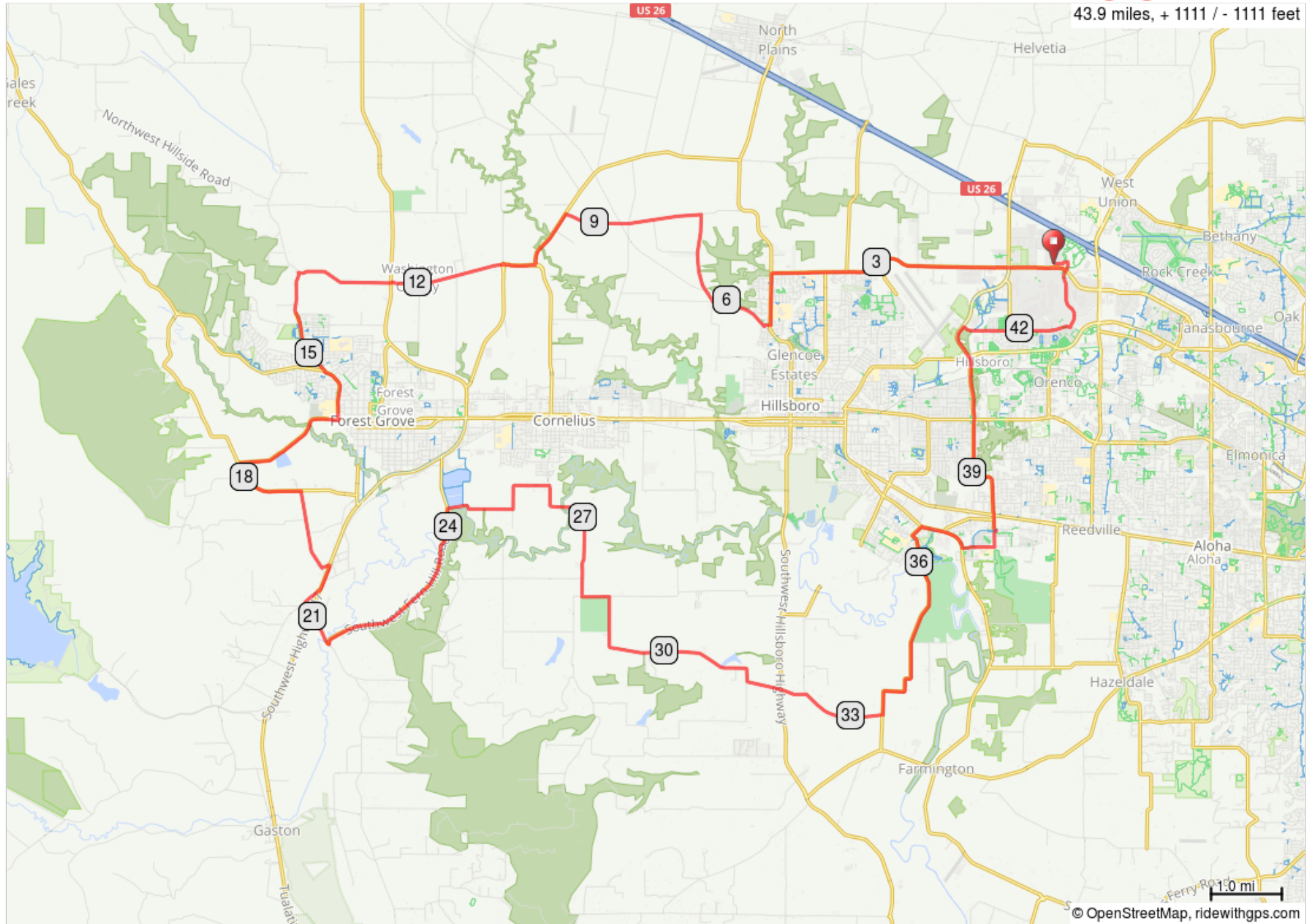


Stringtown-Fernhill v3



43.9 miles, + 1111 / - 1111 feet



Stringtown - Fernhill v3				Distance: 43.9 miles				Elevation: 1,111 feet			
0.2	R	229th	16.4	BeC	Ritchey	31.4	L	Simpson			
0.3	R	Evergreen	17.7	L	Ritchey	31.9	X	OR 219			
4.6	L	Glencoe	17.8	L	Stringtown	31.9	BeC	Burkhalter			
5.3	R	Cory St	18.8	R	Dilley	32.2	R	Burkhalter			
5.4	R	Hornecker	20.0	L	Dudney Ave	33.4	L	Rood Bridge			
6.2	R	Leisy	20.1	R	OR-47	36.4	R	Rood Bridge			
7.5	L	Wren	20.4	R	Old Hwy 47	36.6	R	River			
9.5	L	Cornelius Schefflin	20.7	L	Spring Hill	37.3	L	Davis			
10.3	O	Verboort (1st exit)	21.4	L	Fern Hill	37.8	L	Brookwood Ave			
12.4	O	Purdin (2nd exit)	24.3	R	Geiger	41.2	R	Airport			
13.8	L	Thatcher	25.3	L	Lafollett	41.8	BeC	Butler			
15.3	L	Gales Creek	26.1	R	Golf Course	42.7	L	229th			
15.6	BeC	E St	28.1	L	Tongue	43.7	L	LaCie			
16.1	R	Cemetery/Pacific	28.5	R	Johnson School						

Key: R=right turn L=left turn BeC=becomes new Rd name O=round-about X=Crossing Hwy U=U-turn

